



An Oshkosh Corporation Company

ES Scissors Descent Valve Cable Replacement

Installation Instructions

The purpose of this instruction is to properly install and route the manual descent valve cable on JLG ES scissors models when the cartridge valve PN: 7023543 is replaced.

It is recommended that you read and thoroughly understand these instructions before starting this procedure.



CAUTION

Disconnect the battery power from the machine.

Refer to the service and maintenance manual and illustrated parts manual for safe and proper disassembly/assembly procedures.

NOTICE

Use all applicable Safety precautions while working on, around or under any machinery.

Models Affected:

- 1930ES: equipped with lift cylinder PN 1684484
- 2030ES: equipped with lift cylinder PN 1684487
- 2630ES: equipped with lift cylinder PN 1684488
- 2646ES: equipped with lift cylinder PN 1684489
- 3246ES: equipped with lift cylinder PN 1684490

Options/Accessories Prohibited When Installing This Kit:

- None

Tools & Equipment Required:

- Standard mechanic's tools

Personnel Required:

- Qualified JLG equipment mechanic

General Guidelines:

This procedure provides parts and information for a specific update. It is the responsibility of the entity performing the updates to determine if they can be completed by this procedure.

A
05/30/2015

3121573



ES Scissors Descent Valve Cable Replacement

Procedure:

1. Follow the procedures as outlined in the Service and Maintenance manual PN: 3121166 for removing and replacing cartridge valve PN: 7023543.
2. See Figure 1 for cable installation at cylinder.

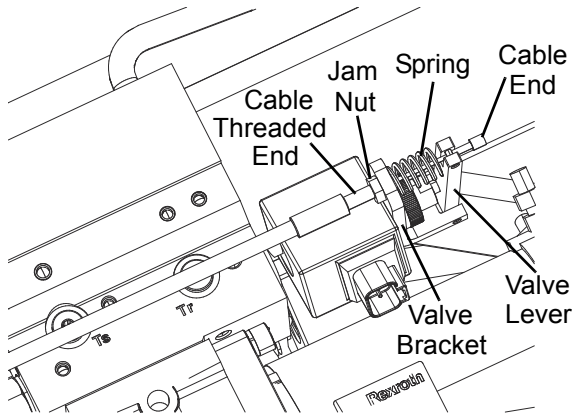


Figure 1

3. Assembly of cable threaded end.
 - Step 1: Install Nut.
 - Step 2: Install Spring.
 - Step 3: Close Bracket & trap Spring by tapping p pin.
 - Step 4: Tighten nut against bracket.

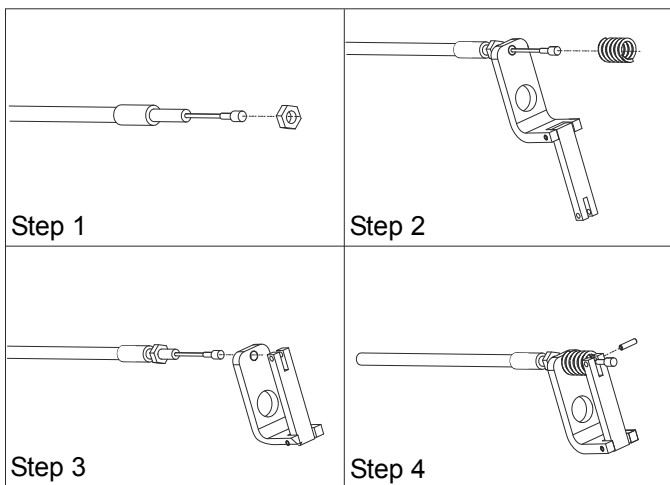


Figure 2

4. View of cable routing after valve installation.

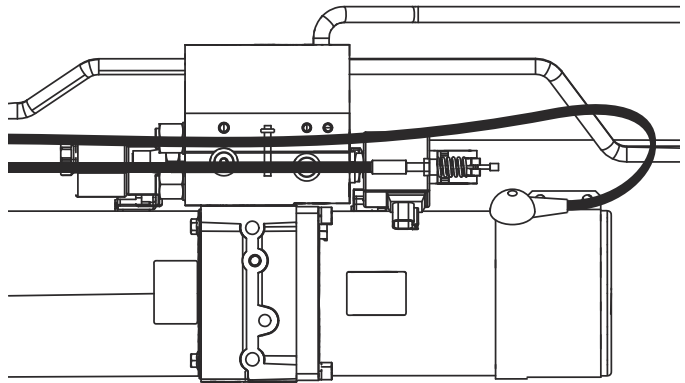


Figure 3

5. View of Cable Routing at Descent Valve.

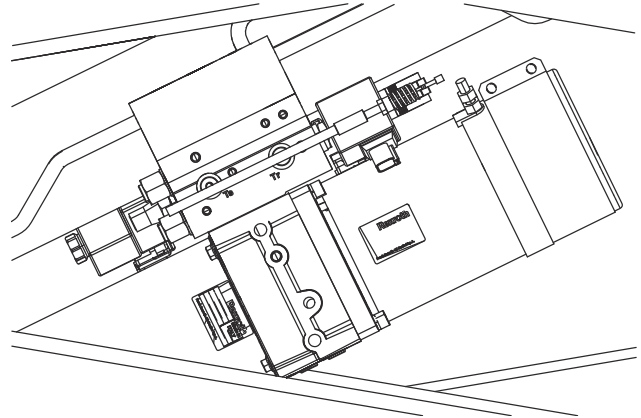


Figure 4

6. View of Descent Valve (Cable removed for clarity). After Cable is installed, Clearance is required between Valve Lever and Plunger. Adjust cable as required using jam nut on Threaded cable end.

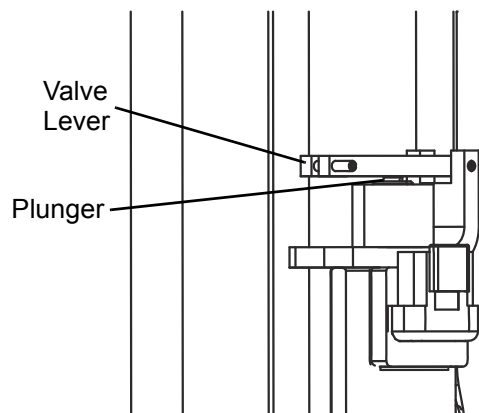


Figure 5

ES Scissors Descent Valve Cable Replacement

7. View of Cable Routing at Cylinder Mounting Plate. Route Manual Descent Cable along Hydraulic hoses control cable. Ensure there is no rubbing on sharp edges. At full height, verify if cable clears edges, avoid pinch points.

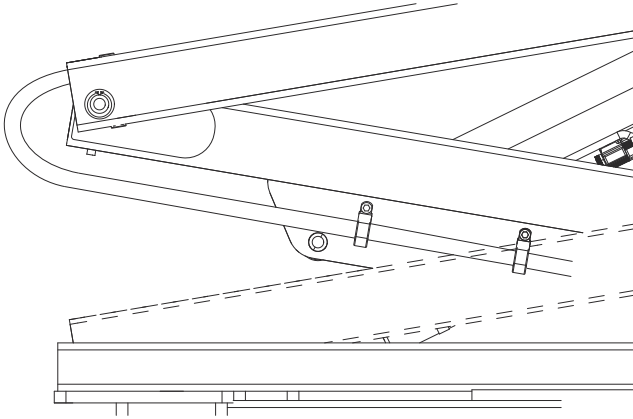


Figure 6

8. View of Cable Routing at Frame.

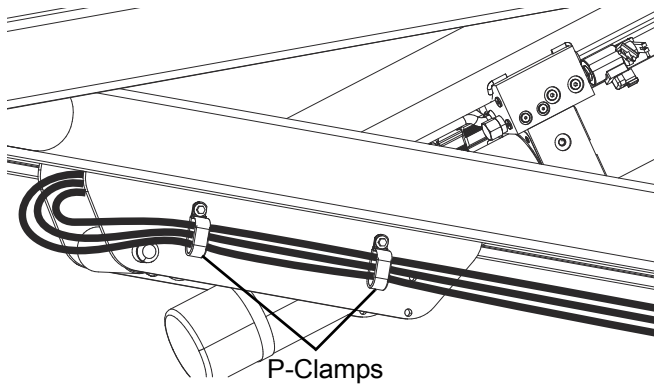


Figure 7

9. View of Cable Routing at Frame. Elevate machine to full height Check Valve Lever clearance (Refer Fig 7). There should be clearance between Lever and Plunger, adjust as required with jam nut on threaded cable end. Pull handle and verify if descent valve opens & Scissor arms retract.

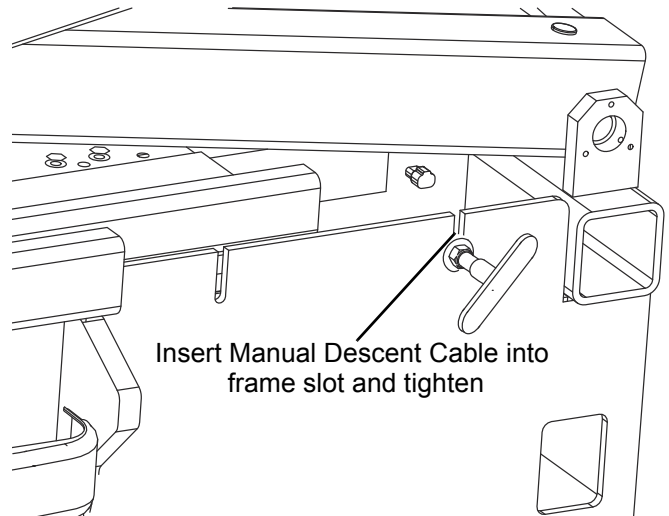


Figure 8